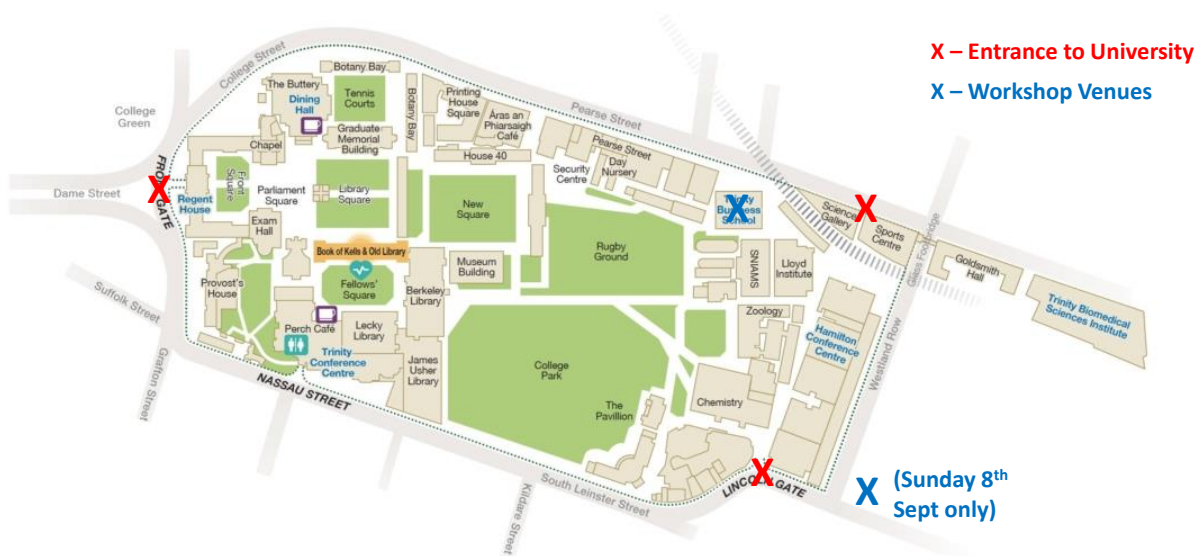


European Two-Phase Flow Group Meeting Directions

The ETPFGM workshop will be held at Trinity College Dublin. The Google Maps link to Trinity College is <https://maps.app.goo.gl/o5zRUR1LE8gKr68KA>.

The campus has three main entrances, marked with red X's below. The conference venue is split across two locations, marked in blue X's below.

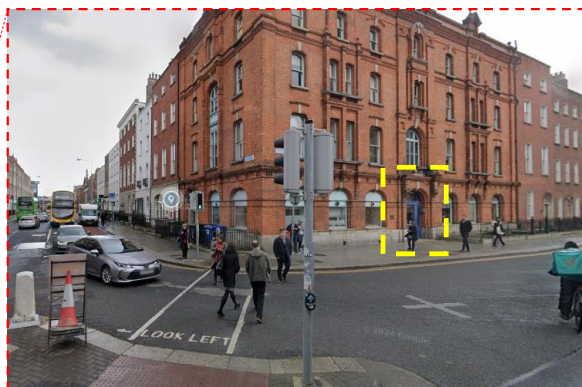
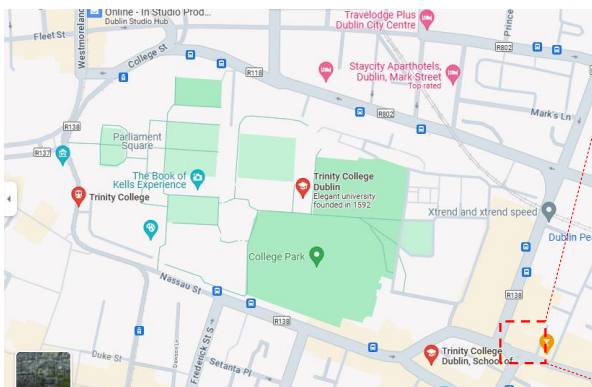
More 'getting around' information is provided below.



Day 1: Sunday September 8th 2024

Venue: CONNECT Centre, Trinity College Dublin, Dunlop Oriel House, 34 Westland Row, Dublin

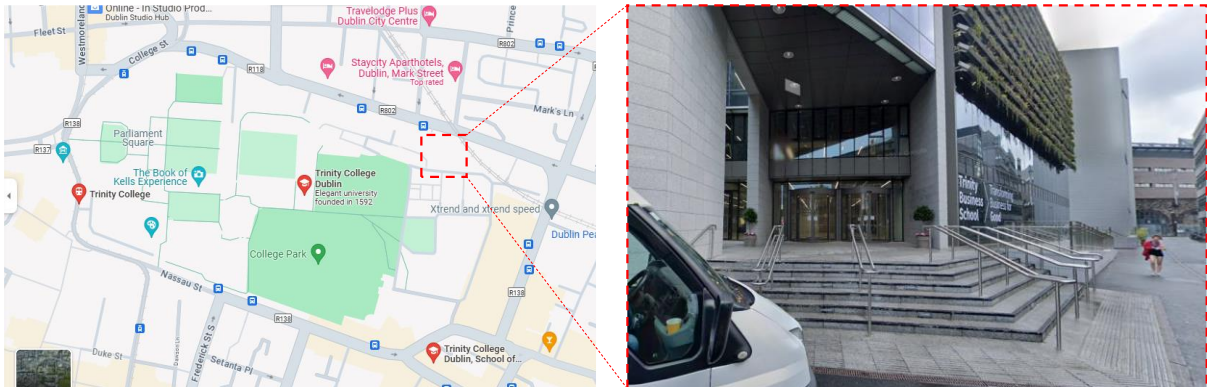
Maps Link: <https://maps.app.goo.gl/7aLc4vLtG22ALsEw6>



Day 2-4: Monday September 9th to Wednesday September 11th 2024

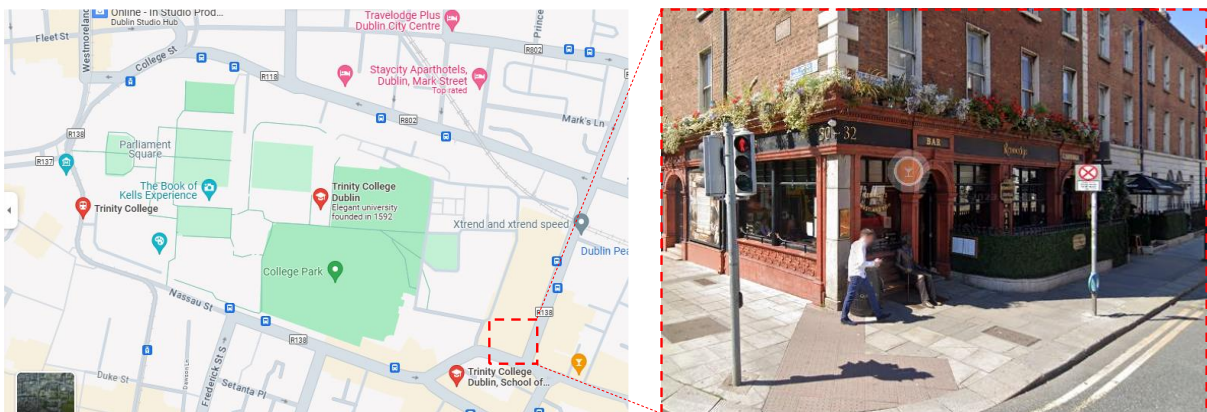
Venue: Portal (formerly Tangent) Innovation Space, Luce Hall, First Floor, Trinity Business School, Pearse St, Dublin 2, D02 H308

Maps Link: <https://maps.app.goo.gl/p78SRkMtjZJsFV3SA>



Sunday Social Event: Kennedy's Pub & Restaurant, 30-32 Westland Row, Dublin 2, D02 DP70

Maps Link: <https://maps.app.goo.gl/HouKHyzZ56SnLC3A>



Tuesday Gala Dinner: Ely Wine Bar, 22 Ely Pl, Dublin 2, D02 AH73

Maps Link: <https://maps.app.goo.gl/XLN879My1xpwdTnF8>

