

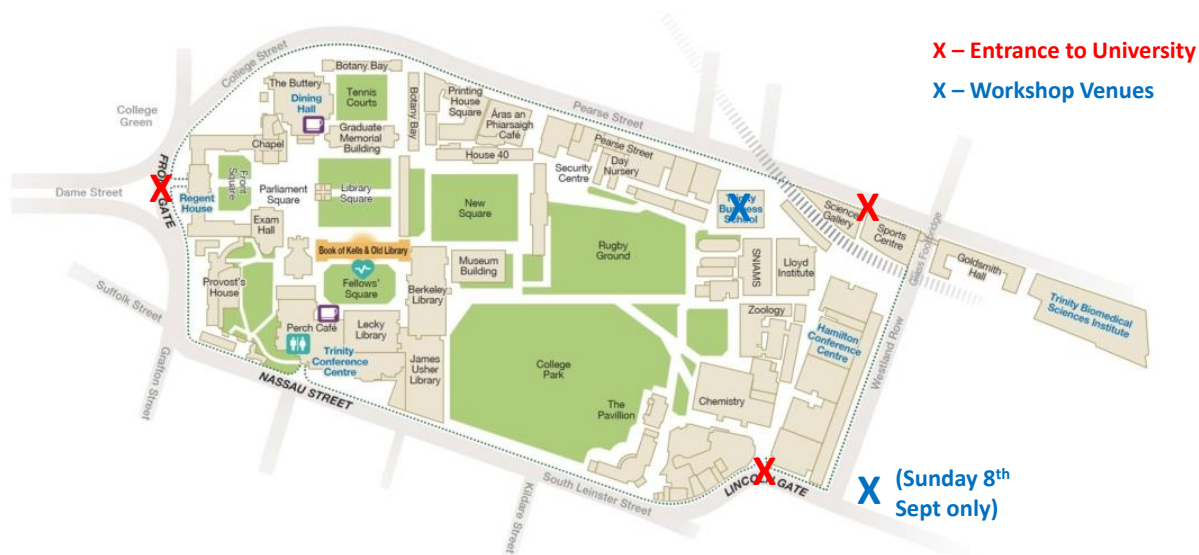
## European Two-Phase Flow Group Meeting Directions

The ETPFGM workshop will be held at Trinity College Dublin. The Google Maps link to Trinity College is <https://maps.app.goo.gl/o5zRUR1LE8gKr68KA>.

The campus has three main entrances, marked with **red X's** below. The conference venue is split across two locations, marked in **blue X's** below.

More 'getting around' information is provided below.

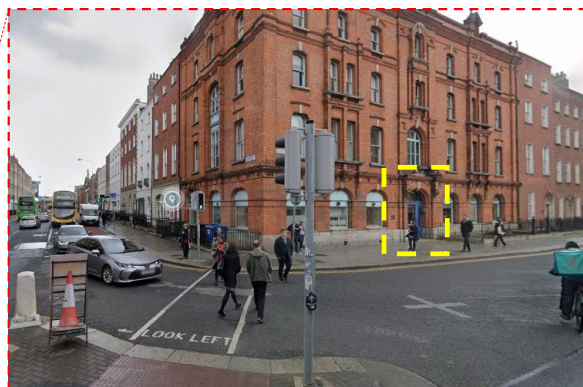
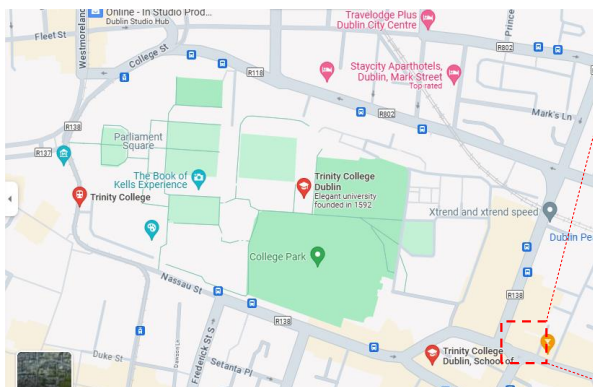
If you need assistance at any time, please ring or text +353 85 156 3366.



### Day 1: Sunday September 8<sup>th</sup> 2024

**Venue:** CONNECT Centre, Trinity College Dublin, Dunlop Oriel House, 34 Westland Row, Dublin

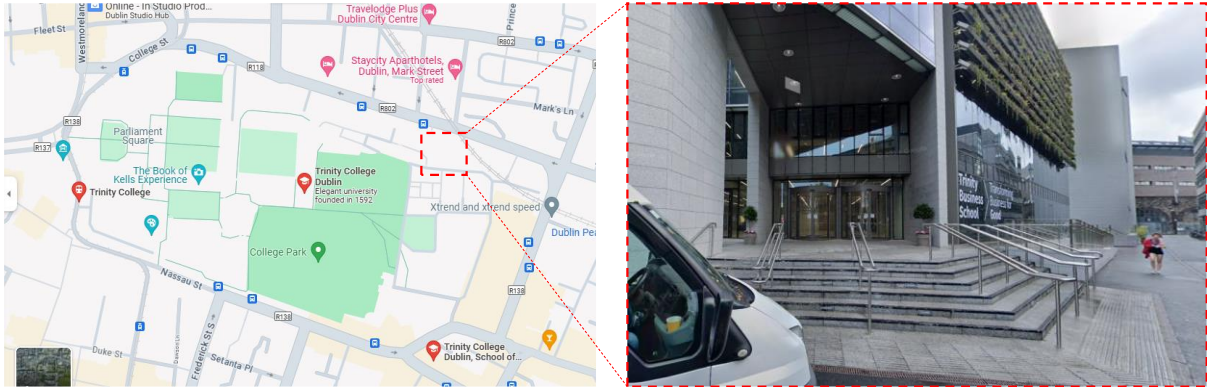
**Maps Link:** <https://maps.app.goo.gl/7aLc4vLtG22ALsEw6>



**Day 2-4: Monday September 9<sup>th</sup> to Wednesday September 11<sup>th</sup> 2024**

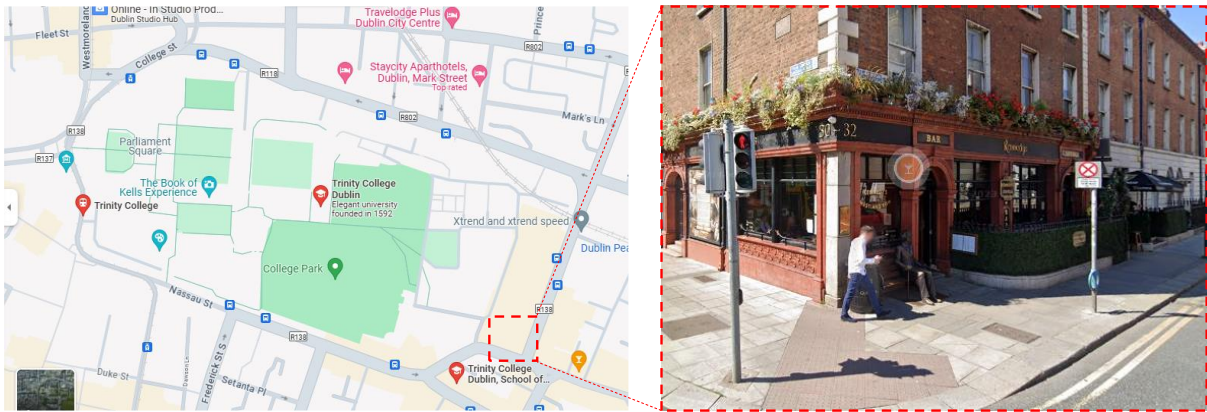
**Venue:** Portal (formerly Tangent) Innovation Space, Luce Hall, First Floor, Trinity Business School, Pearse St, Dublin 2, D02 H308

**Maps Link:** <https://maps.app.goo.gl/p78SRkMtjZJsFV3SA>



**Sunday Social Event: Kennedy's Pub & Restaurant, 30-32 Westland Row, Dublin 2, D02 DP70**

**Maps Link:** <https://maps.app.goo.gl/HouKHyzZ56SnLC3A>



**Tuesday Gala Dinner: Ely Wine Bar, 22 Ely Pl, Dublin 2, D02 AH73**

**Maps Link:** <https://maps.app.goo.gl/XLN879My1xpwdTnF8>

